

Research Intelligence

# SciVal

## Quick Reference Guide



SciVal offers quick, easy access to the research performance of over 12,000 research institutions and 230 nations worldwide—so you can visualize research performance, benchmark relative to peers, develop collaborative partnerships and analyze research trends.

SciVal offers quick, easy access to the research performance of over 12,000 research institutions and 230 nations worldwide. A ready-to-use solution with unparalleled power and flexibility, SciVal enables you to navigate the world of research and devise an optimal plan to drive and analyze your performance.

## Data source

SciVal is based on output and usage data from Scopus, the world's largest abstract and citation database for peer-reviewed publications.

SciVal uses Scopus data from 1996 to current date, which covers over 48 million records:

- 21,000 serials from 5,000 publishers. These include:
- 22,000+ peer-reviewed journals
- 360 trade publications
- 1,100 book series
- 5.5 million conference papers

## Metrics

SciVal offers a broad spectrum of industry-accepted and easy-to-interpret metrics including Snowball Metrics which are global standard metrics defined and agreed by higher education institutions for institutional strategic decision making through benchmarking.

Metrics in SciVal help the institutions to measure an institution's or a country's productivity, citation impact, collaboration, subject disciplinarity and more.

For further information about the metrics available in SciVal and how to use them together please see [the Research Metrics Guidebook](#)



ELSEVIER

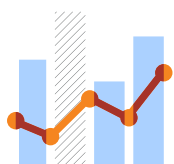
# Build your views on the world's research



## Visualize research performance

Access comprehensive research performance summaries of any desired research entities, identify their unique research strengths and multidisciplinary research areas.

- Retrieve at-a-glance, standardized reports instantly
- Access competency maps for all institutions and countries
- Topics allow you to create a complete portfolio overview in a matter of minutes



## Benchmark your progress

Compare the performance of any institutions, countries, and pre-defined groups, or create your own research areas and monitor progress over time.

- Perform in-depth analyses to meet your specific objectives by selecting any combination of subject areas and metrics from a comprehensive set
- Identify your relative strengths and weaknesses to optimize your strategy



## Create customized Reports

Create analyses from across the modules, combine a selection of analyses to create uniquely tailored Reports. Save your most utilized reports in SciVal to export and share whenever you need it.

- Edit the analyses, adding and removing entities, changing the year range and/or selecting more metrics and save
- Share Reports with other SciVal users within your Institution



## Develop collaborative partnerships

Identify and analyze existing and potential collaboration opportunities based on publication output and citation impact.

- Explore your institution's current and prospective partnerships on the map view
- Identify your top collaborative institutions and co-authorship by drilling into specific subject areas and self-defined research topics



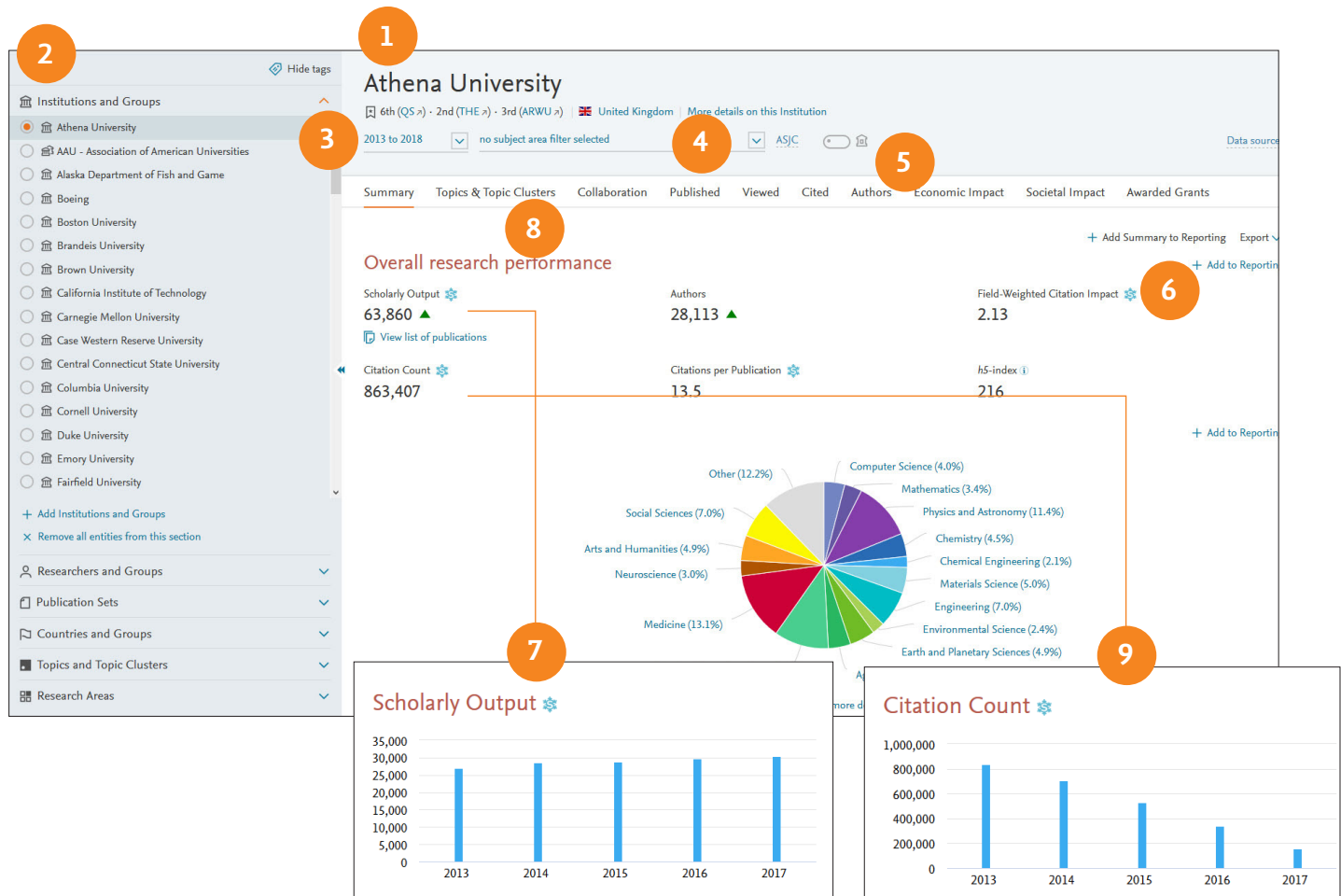
## Analyze research trends

Analyze the research trends of any Research Area, Topic or Topic Cluster to create a complete portfolio overview in a matter of minutes with citation and usage data, to discover the top performers, rising stars and current developments in the field.

- View the overall performance of a Research Area, Topic or Topic Cluster, then dig deeper into the activity and impact of the institutions, countries, authors and journals involved and adjust your research strategy accordingly
- Usage information complements citation data to give a more complete picture of research performance

# Visualize research performance

Comprehensive summaries of any desired research entities such as institutions, countries, research groups and topics.



1. **Overview tab** provides you with at-a-glance research performance overviews of any selected institutions, countries, research topics and more.

2. **Select entity panel** allows you to select any research entities from:

- Institutions and Groups
- Researchers and Groups
- Publication Sets
- Countries and Groups
- Topics and Topic Clusters
- Research Areas

Add an institution or a country by typing the name in the search box, and SciVal will provide you with a list of pre-defined institutions, countries and groups to select from.

3. **Select year range from:**

3 years\*

5 years\*

\* + current year and beyond

4. **Filter subject area** using 27 top level and 334 lower level subject areas based on Scopus All Subject Journal Classification (ASJC). You can additionally filter by Fields of Research (FoR), Field of Science and Technology (FOS), Research Excellence Framework (REF), QS, THE or KAKEN.



ELSEVIER



# Athena University

3rd (QS) · 6th (THE) · 1st (ARWU)
 United States
[More details on this Institution](#)

2013 to 2017
 no subject area filter selected
ASJC
Data sources

Summary Topics Awarded Grants **Collaboration** Published Viewed Cited Economic Impact Societal Impact Authors

Overall **Top collaborating Institutions**

by number of publications co-authored with Athena University

[+ Add to Reporting](#)
[Export](#)
[Shortcuts](#)

Institution	Co-authored publications	Citations received for co-authored publications	Co-authors	Field-Weighted Cita...
1. <span>United States</span> Massachusetts Institute of Technology	6,399	257,337	6,532	3.91
2. <span>United States</span> Dana-Farber Cancer Institute	6,274	214,958	4,774	3.59
3. <span>United States</span> Boston University	5,611	148,901	4,289	3.59
4. <span>United States</span> University of Pennsylvania	5,026	178,552	4,379	4.97
5. <span>United States</span> Johns Hopkins University	4,986	197,557	4,527	5.20
6. <span>United States</span> University of Washington	4,734	184,337	4,149	5.28

2013 to 2017
 no subject area filter selected
ASJC
Data sources

Summary Topics Awarded Grants Collaboration Published Viewed Cited Economic Impact Societal Impact **Authors**

**Authors**

Top 500 authors, by number of publications at Athena University over the period 2013 to 2017.  
Note that some authors may no longer be affiliated with Athena University.

[+ Add to Reporting](#)
[Export](#)

Add to panel

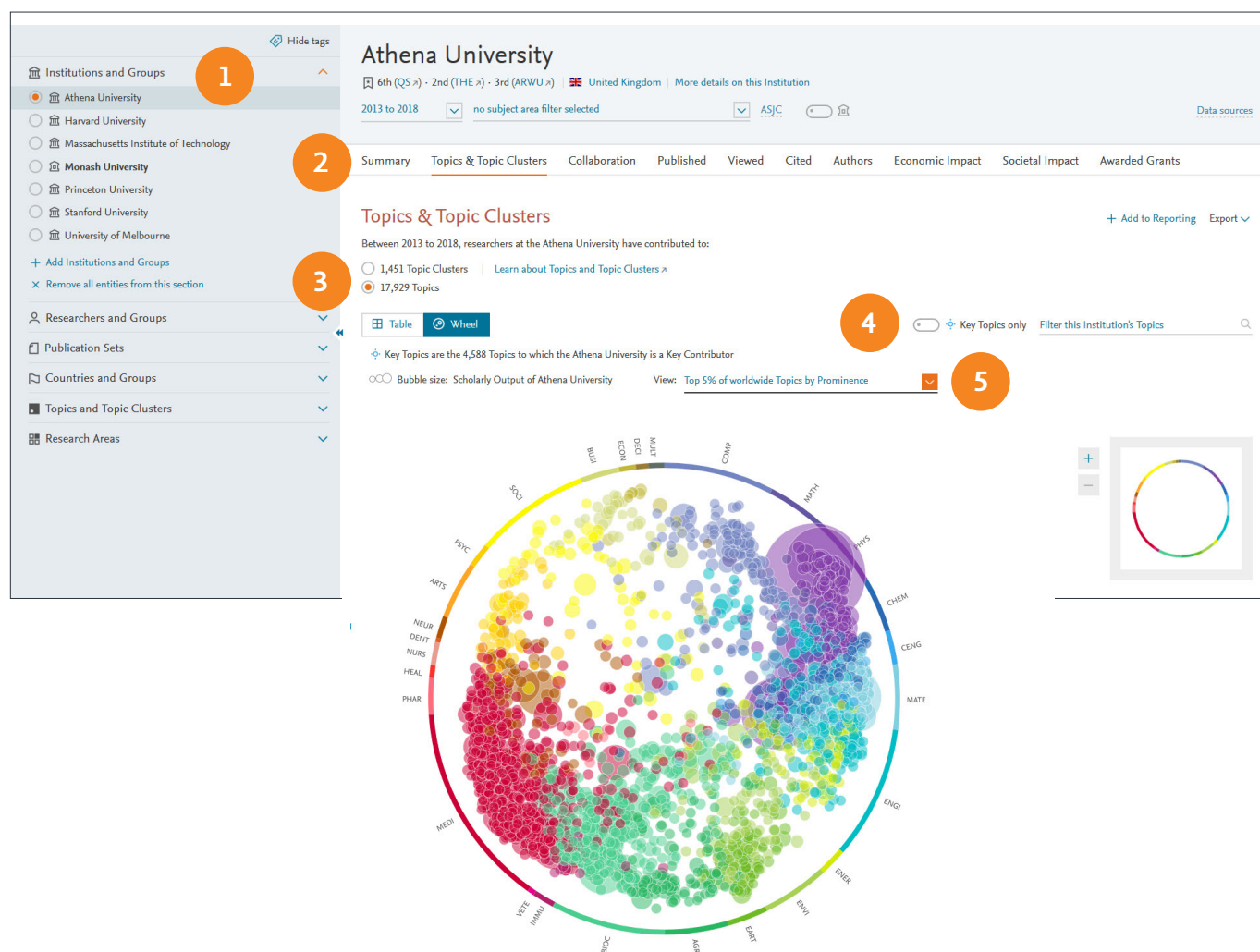
Name	Publications	Most recent publication	Citations	h-index
1. <input type="checkbox"/> Franklin, Melissa E.B.	541	2017	16,026	98
2. <input type="checkbox"/> Bhatt, Deepak L.	487	2017	15,050	110
3. <input type="checkbox"/> Huth, John E.	484	2017	15,969	85
4. <input type="checkbox"/> Morii, M.	474	2017	15,649	76
5. <input type="checkbox"/> Skottowe, Hugh P.	421	2017	15,347	72
6. <input type="checkbox"/> López Mateos, D.	420	2017	14,116	73

- Filter by 'home institution' to include only the publications affiliated with the home institution
- Metric themes' tabs provide comprehensive understanding of the selected research entity based on:
  - Summary
  - Topics & Topic Clusters (8)
  - Publications (7)
  - Citations (9)
  - Authors (for Institutions and Research Areas) (11)
  - Collaboration (10)

- Institutions (for countries)
  - Economic Impact
  - Viewed
  - Societal Impact (for institutions)
  - Awarded Grants (for institutions and countries)
12. Add to Reporting to create a Report based on several Analyses

# Conduct a complete portfolio analysis

See which Topics your institution is currently active in, and which Topics have high momentum, therefore more likely to be well-funded. Get insight into which researchers are active in specific Topics, which Topics peers and competitors are active in and the related Topics of which you should be aware.



1. Start in the Overview module and select an institution
2. Go to the Topics & Topics Clusters section to see which Topics an institution has contributed to
3. Using the toggle you can either analyze the individual Topics or the higher-level Topic Clusters
4. Use the Key Topics filter to see only the Topics where an institution is considered to be a key contributor.
5. Limit to view the top x% of worldwide Topics by Prominence



ELSEVIER

# Athena University

6th (QS) · 2nd (THE) · 3rd (ARWU) | United Kingdom | [More details on this Institution](#)

2013 to 2018 | no subject area filter selected | ASJC | [Data sources](#)

[Summary](#)
[Topics & Topic Clusters](#)
[Collaboration](#)
[Published](#)
[Viewed](#)
[Cited](#)
[Authors](#)
[Economic Impact](#)
[Societal Impact](#)
[Awarded Grants](#)

## Topics & Topic Clusters

Between 2013 to 2018, researchers at the Athena University have contributed to:

☐ 1,451 Topic Clusters | [Learn about Topics and Topic Clusters](#)

☒ 17,929 Topics

Table

Wheel

6

☐ Key Topics only

Key Topics are the 4,588 Topics to which the Athena University is a Key Contributor

	At this Institution			Worldwide
Topic	Scholarly Output ↓	Publication Share	Field-Weighted Citation Impact	Prominence percentile
<input checked="" type="radio"/> jets; production; parton shower ... T.1026	281	14.31% ▲	3.97	99.875
<input checked="" type="radio"/> galaxies; dust; infrared galaxies ... T.405	188	15.65% ▼	2.28	99.111
				96.248
				99.755
				100.000

### Activity of the Athena University

Within: jets; production; parton shower T.1026 | Year range: 2013 to 2018 | [Analyze Topic worldwide](#)

Summary

Authors

Compare to your Institution

#### Performance

Scholarly Output  
281

Field-Weighted Citation Impact  
3.97

International Collaboration  
271

Views Count  
32,521

Citation Count  
6,016

Worldwide Topic Prominence  
99.875

#### Collaboration

International Collaboration  
Publications co-authored with Institutions in other countries  
Athena University  
96.4%

Academic-Corporate Collaboration  
Publications with both academic and corporate affiliations  
Athena University  
0.0%

#### Top 15 keyphrases

Based on 281 publications

Relevance of keyphrase

0.25 0.5 0.75

collisions

detectors

luminosity

protons

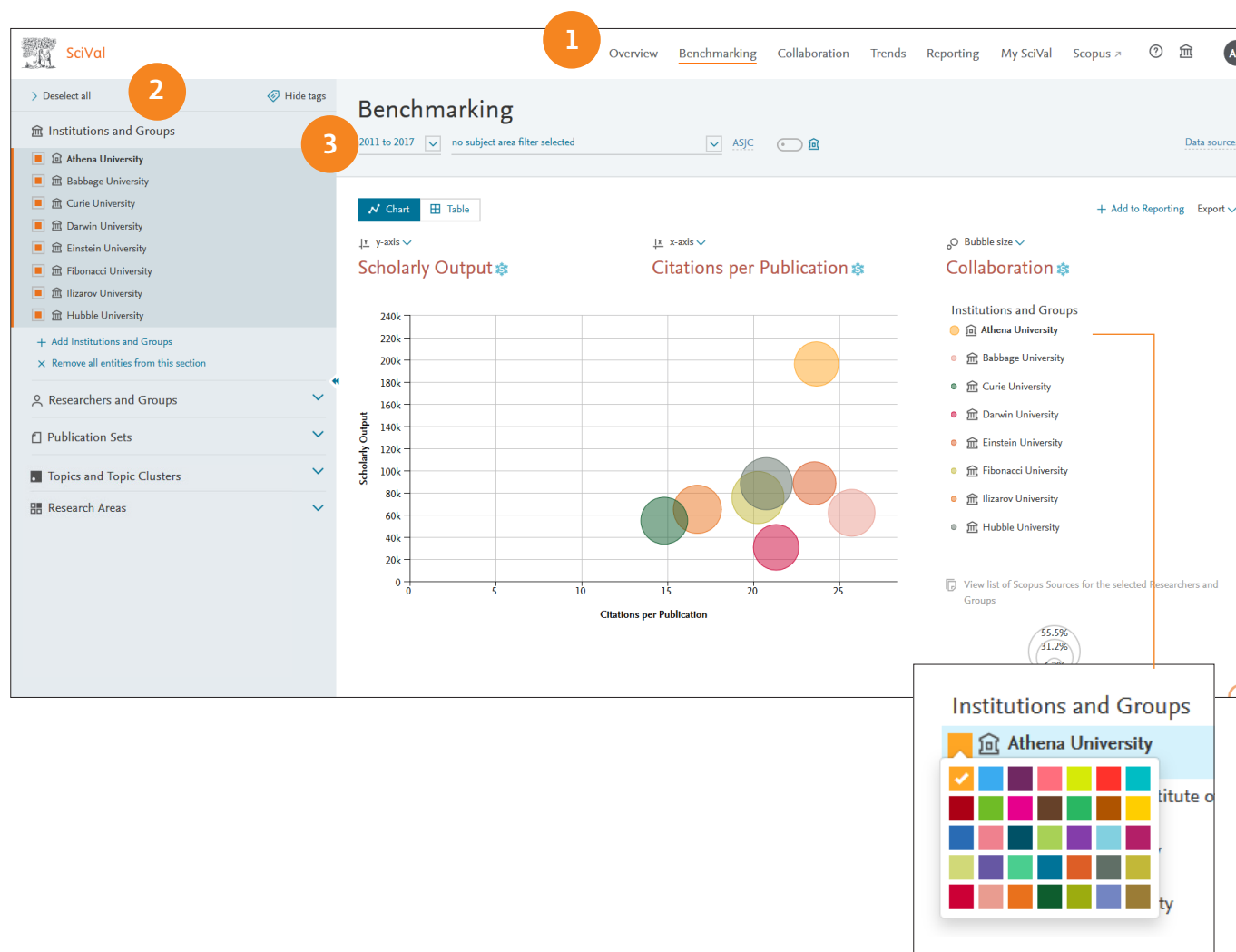
transverse momentum

center of mass

6. Select the **Table view** to get an overview of the Topics or Topic Clusters ranked by Scholarly Output
7. Select a **Topic or Topic Cluster** and analyze it in further detail for an institution
8. Get a quick overview of the **Topic** for an institution, the Field-Weight Citation Impact, the level of international collaboration and the underlying keyphrases sorted by relevance
9. Or analyze the Topic globally via the **Trends module** (see pg. 12)

# Benchmark your progress

Assess your relative strengths and weaknesses by making custom selections of research groups, indicators and subject areas to compare and benchmark against.



1. **Benchmarking tab** provides advanced capabilities to perform in-depth analyses by combining flexible set of entities and metrics.
2. **Using the entity panel**, select any desired combination of research entities you wish to benchmark.

Add **institutions or countries** by typing in the name, and SciVal will provide you with a list of pre-defined institutions and countries to select from.

Add **researchers, publication sets, research areas and groups** by creating your own (see pages 8 and onwards).

3. **Select year range** between 1996 and the current year.

Select a country, region or “world” from Country and Groups to benchmark your relative performance, or create research areas using journals and subject classifications to benchmark against a research topic.



ELSEVIER



# Benchmarking

2011 to 2017 ☐ no subject area filter selected **4** ☐ ASJC ☐ [Data sources](#)

**6**   **7** [+ Add to Reporting](#) [Export](#)

**Metric 1**  **Metric 2**  **Metric 3**

Entity	Scholarly Output	Citations per Publication	Collaboration (%)
Athena University	196,219	23.7	41.0
Babbage University	61,859	25.7	45.4
Curie University	54,800	14.8	46.0
Darwin University	30,662	21.3	43.4
Einstein University	88,565	23.5	38.5
Fibonacci University	75,692	20.2	55.5
Ilizarov University	65,030	16.7	46.6
Hubble University	88,159	20.7	55.4

[View list of Scopus Sources for the selected Researchers and Groups](#)

**Collaboration**

The extent of international, national and institutional co-authorship.

☐ Show as field-weighted

**View:**

☒ International collaboration  
☐ National collaboration  
☐ Institutional collaboration  
☐ Single authorship

**Show as:**

☒ Percentage  
☐ Total value

**Include:**

☒ All publication types  
☐ Articles only  
☐ Articles and reviews  
☐ Articles, reviews and conference papers  
☐ Articles, reviews and editorials  
☐ Articles, reviews, editorials, short surveys  
☐ Conference papers only  
☐ Articles and conference papers

[Choose metric >](#)

**Awarded Grants**

**Collaboration**

Collaboration Impact

Academic-Corporate Collaboration

Academic-Corporate Collaboration Impact

Published

Viewed

Cited

Economic Impact

Societal Impact

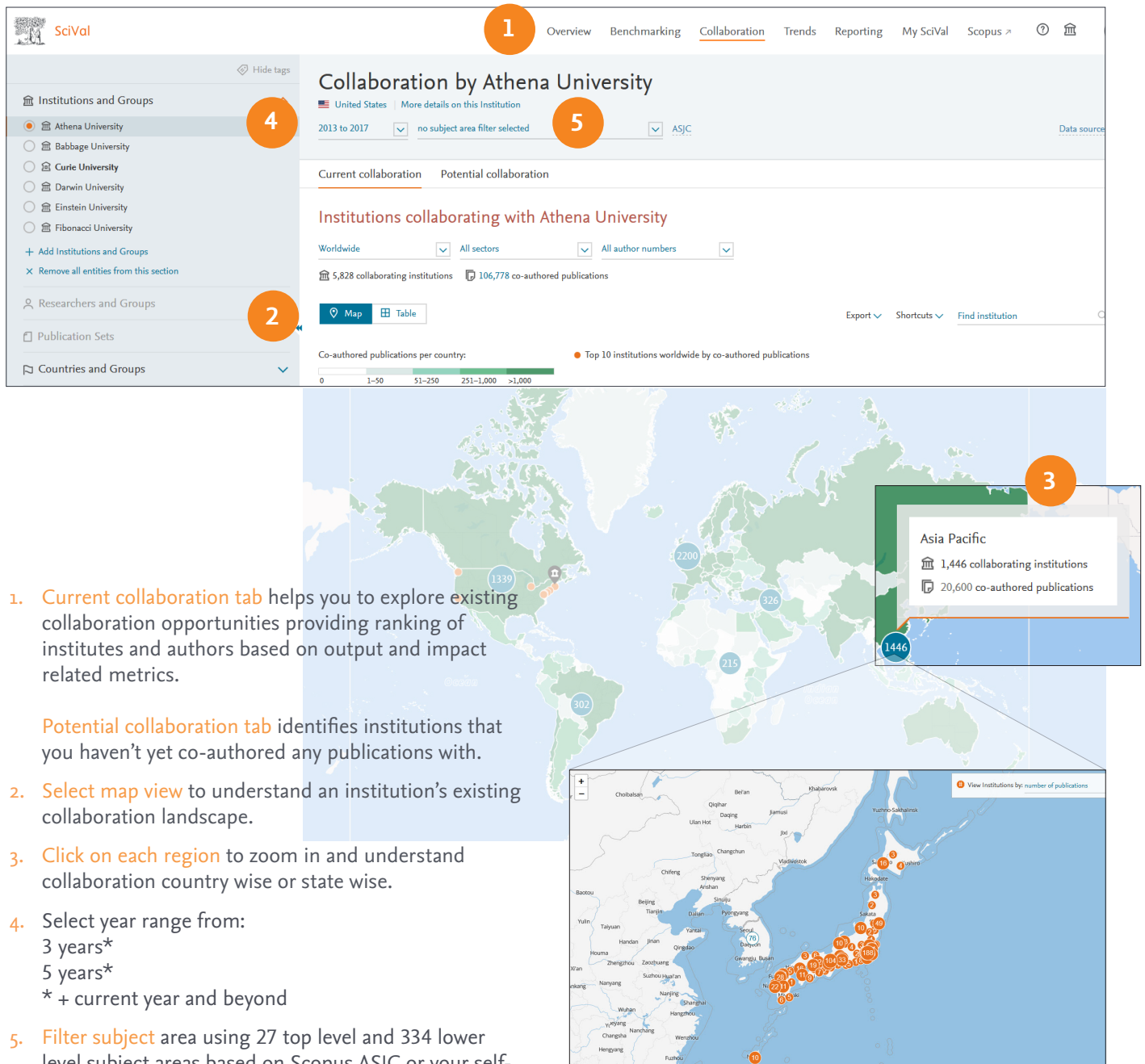
Don't show a third metric

The numbers within the table are clickable, and will show you the underlying publication data.

4. Filter subject area using 27 top level and 334 lower level subject areas based on Scopus ASJC. You can additionally filter by Fields of Research (FoR) , Field of Science and Technology (FOS), Research Excellence Framework (REF), QS, THE or KAKEN.
5. Select any combination of metrics from the pull down list. You can add up to an extra 20 metrics which will be displayed in a table.
6. Switch view between chart and table.
7. Add to Reporting to create a Report based on several Analyses

# Identify and evaluate existing and potential collaboration partners

Get access to a list of institutions that you collaborate or have the potential to collaborate with. Start with a worldwide view of your institution's collaboration landscape, and then zoom in to individual collaborating institutions and researchers anywhere in the world.



1. **Current collaboration tab** helps you to explore existing collaboration opportunities providing ranking of institutes and authors based on output and impact related metrics.

**Potential collaboration tab** identifies institutions that you haven't yet co-authored any publications with.

2. **Select map view** to understand an institution's existing collaboration landscape.

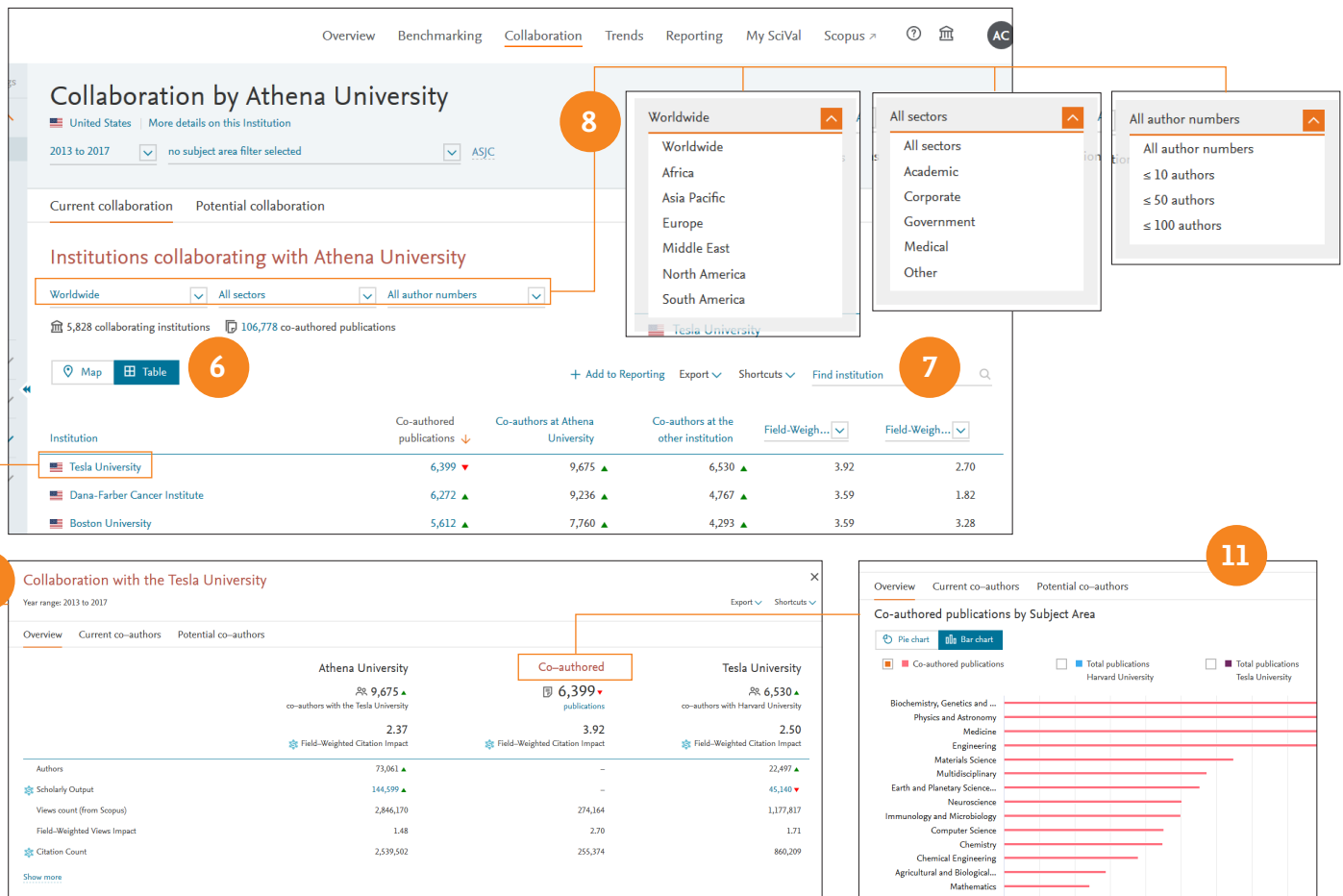
3. **Click on each region** to zoom in and understand collaboration country wise or state wise.

4. **Select year range from:**  
3 years\*  
5 years\*  
\* + current year and beyond

5. **Filter subject area** using 27 top level and 334 lower level subject areas based on Scopus ASJC or your self-defined Research Areas.



ELSEVIER



6. Select table view to access list of collaborating institutions.
7. Search institutions by name.
8. Limit collaborating institutions by region, country, number of authors and sector.
9. Sort collaborating institutions by impact using:
  - Citations
  - Citations per Publication
  - Field-Weighted Citation Impact
  - Awarded Grants
  - Views
  - Views per Publication
  - Field-Weighted View Impact
10. Select institutions to: Assess output and impact of co-authored publications relative to performance of the entire institution and view the subject area spread of co-authored publications
11. Identify collaborating authors from each institution and identify which authors collaborate with each other.

## Evaluate your potential collaboration partners

Once you have identified potential institutions and researchers to collaborate with, you can:

- Glance through the Overview module to:
  - gain a comprehensive overview of selected institutions
  - specify top authors per subject field of your interest
  - explore the institution's Topics and Topic Clusters
- Compare candidate institutions using the Benchmarking module to:
  - assess unique strengths of selected institutions by combining different metrics
  - test scenarios by modeling teams with selected researchers
  - benchmark performance against potential competitors
- Review their collaboration partners using the Collaboration module to:
  - find out if anyone from your institution have co-author relationships
  - understand the top collaborators per discipline and how beneficial those collaborations are

# Analyze Research Trends

Analyze the research trends of any Research Area with citation and usage data, to discover the top performers, rising stars and current developments in the field.

1. **Trends tab** provides the ability to perform advanced Topics centric analysis of any Research Area, Publication Set, Topic or Topics Cluster. with usage and citation data.
2. **Using the entity selection panel**, select the Research Area, Publication Set, Topic or Topics Cluster you wish to analyze. Either choose one you have defined or select from the 334 pre-defined Research Areas based on the Scopus journal classifications (ASJC).
3. Select year range from:  
3 years\*  
5 years\*  
\* + current year and beyond
4. **Summary tab** provides an at-a-glance view of your Research Area, Publication Set, Topic or Topics Cluster. Key metrics at the top of the page highlight the overall research performance. The word cloud gives a visual description of the developments within the field.
5. **Entity tabs** provide comprehensive understanding of the selected Research Area, Publication Set, Topic or Topics Cluster based on:
  - Institutions
  - Countries
  - Authors
  - Journals
  - Keyphrases
  - Scopus Source
  - Related Topics (for Topics)
  - Funding Bodies (for pre-defined Research Areas)
6. **The Representative publications toggle** allows you to filter on the top 10 publications which are strongly linked to a Topic
7. Scroll down the page to see the top Institutions, top Authors, top Countries and top Scopus Sources related to the Topic, Topic Cluster and Research Area
8. **Institutions tab** shows you the global dispersion of the top 100 Institutions via the map view
9. **Keyphrases tab** allows you to analyze the top 50 keyphrases relating to the Topic or Research Area in further detail

## How are keyphrases calculated?

SciVal uses the Elsevier Fingerprint Engine to extract distinctive keyphrases within the Research Area, Publication Set, Topic or Topic Cluster.

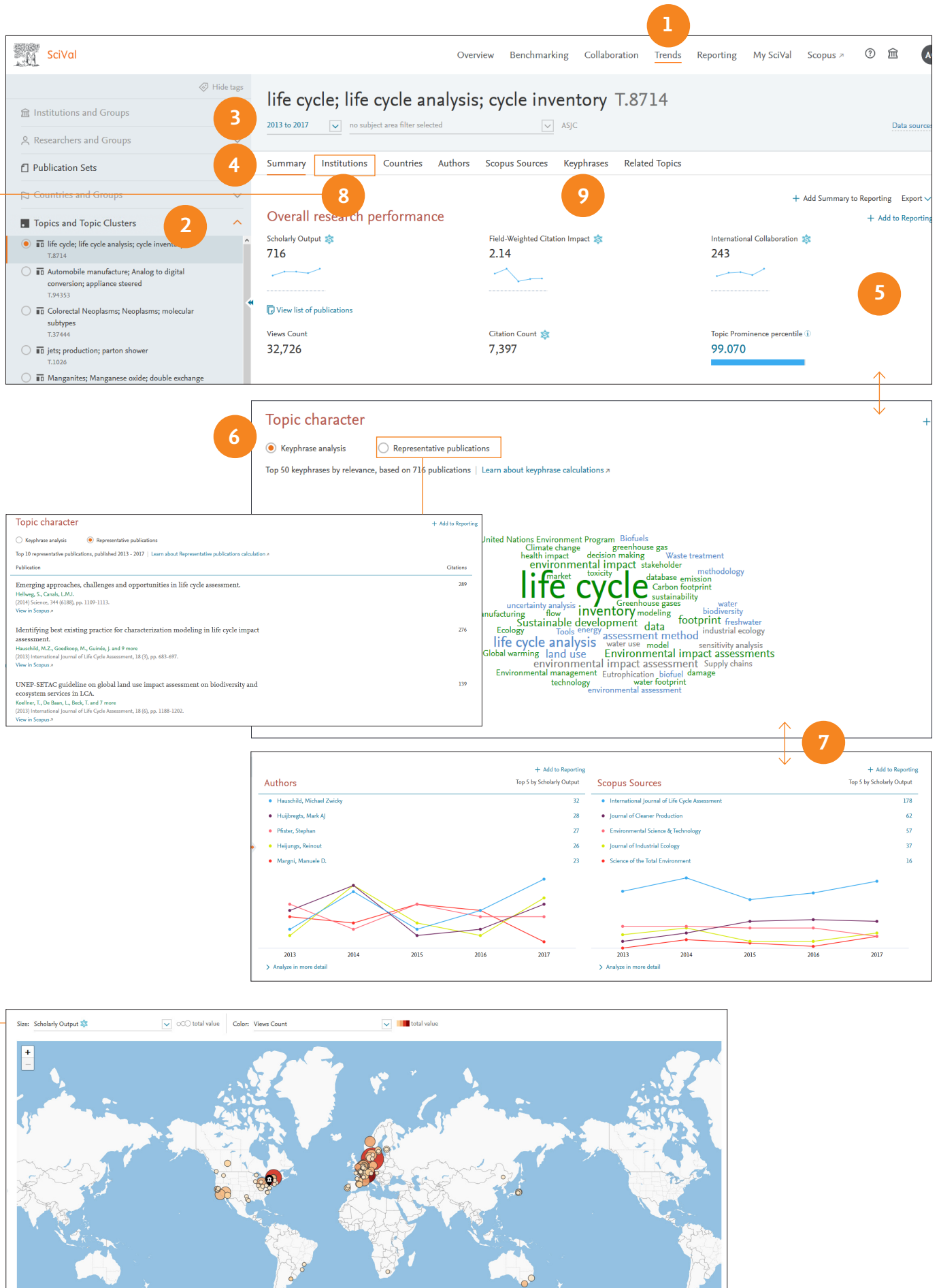
The text mining is done through applying a variety of Natural Language Processing techniques to the titles and abstracts of the documents in the Research Area, Publication Set, Topic or Topic Cluster in order to identify important concepts.

Concepts are matched against a set of thesauri spanning all major disciplines. For each document the distinctive keyphrases are selected based on Inverse Document Frequency (IDF), by incorporating a factor that diminishes the weight of words that occur frequently in the document set, and increases the importance of words that occur rarely. The top 50 keyphrases with the highest word weight are then selected to populate the word cloud for your chosen Research Area, Publication Set, Topic or Topic Cluster.

Each keyphrase is then given a relevance between 0 and 1 with 1 given to the most frequently occurring keyphrase. Remaining keyphrases are given a value based on their relative frequency. The relevancy value dictates the size of the keyphrase in the word cloud.



ELSEVIER





# Define your own Research Areas

SciVal offers a flexibility to define your own Research Areas, representing a field of research defined by you.

Find existing Topic or Research Area

Advanced Topic search
Advanced Research Area search
Define a new Research Area

2

Define a new Research Area

1. Create definition 2. Refine definition 3. Save definition

Use search terms Use entities Use Topics

Define a new Research Area based on publications that match...

all of these words:

any of these words:

none of these words:

Want to create a query yourself? Use advanced search

3

Select one or more entities to represent your new Research Area

1. Create definition 2. Refine definition 3. Save definition

Use search terms Use entities Use Topics

Institutions All tags

Copy selected to my new Research Area Type to filter Remove selected from my new Research Area

- > Angel Kanchev University of Ruse
- > 23andMe Inc.
- > 2iE
- > 302 Hospital of PLA
- > 3M
- > SD Health Protection Group Limited
- > AlbiNovus srl
- > A. V. Dumansky Institute of Colloid and Water Chemistry
- > A.V. Bogatsky Physico-Chemical Institute of the N
- > Aachen University of Applied Sciences
- > Aalborg University
- > Aalen University
- > Aalto University
- > Aarhus University

4

Define a Research Area based on Topics

1. Create definition 2. Refine definition 3. Save definition

Use search terms Use entities Use Topics

no subject area filter selected Sort by Scholarly Output

Copy selected to my new Research Area Type to filter Remove selected from my new Research Area

- Industry; Petrochemicals; motor gasoline T.6003 - 13,930 publications - 54,134 percentile
- Solar cells; Heterojunctions; organic photovoltaics T.0 - 12,045 publications - 99,993 percentile
- Perovskites; Solar cells; methylammonium lead T.20 - 9,929 publications - 100,000 percentile
- Electrolytic capacitors; Capacitance; asymmetric supercapacitors T.6 - 8,423 publications - 99,992 percentile
- Molybdenum compounds; Monolayers; dichalcogenides TMDs T.63 - 8,284 publications - 99,999 percentile
- RNA; Long Untranslated; Neoplasms; cancer tissues T.115 - 7,291 publications - 99,986 percentile

Drag and drop at least one entity from the list on the left to define your Research Area

1. **Research Areas** can represent a strategic priority, an emerging area of science, or any other topic of interest using below as the building blocks:

2. **Search terms**

Search for publication sets using keyword(s)

3. **Entities**

Select and combine any of the below

- Institutions (+ groups)
- Countries (+ groups)
- Journal categories
- Journals
- Subject area
- Scopus source

4. **Topics**

Select and combine a number of Topics to create a new Research Area

**Note:** Computation of Research Areas with more than 5,000 publications will take up to 6 hours. There is a 100,000 publication limit. You will be notified when the Research Area is available.

## Pre-defined entities

SciVal is a ready-to-use solution with access to over 12,000 pre-defined institutions and 230 nations and groups.

Several groups of institutions and countries are made available such as EU28, US states, German Bundesländer and more.

Pre-defined Research Areas are available using the 334 subject areas based on Scopus All Subject Journal Classification (ASJC)

This Research Area has 40,114 matching publications (2013 - present). It could take about 6 hours to be computed. No processing is done during weekends. You will be notified as soon as the Research Area is available. Note that Research Areas with less than 5,000 matching publications can be computed and used immediately. You can apply filters to further reduce the number of matching publications.

Continue to next step >

Refine further >



ELSEVIER

**5**

1. Create definition 2. Refine definition 3. Save definition

### Refine your definition by applying one or more filters

Definition of your Research Area: Industry; Petrochemicals; motor gasoline (T.6003) OR Solar cells; Heterojunctions; ... (T.0) [Show all](#)

Total matching publications (2013-present) **19,372**

Currently applied filters: **No filters applied yet**

Filter Category	Filter Name	Publications
Subject areas	<input type="checkbox"/> Materials Science	11,848
	<input type="checkbox"/> Chemistry	7,796
	<input type="checkbox"/> Engineering	4,672
	<input type="checkbox"/> Energy	4,653
	<input type="checkbox"/> Physics and Astronomy	4,511
	<input type="checkbox"/> Chemical Engineering	3,091
	<input type="checkbox"/> Medicine	1,045
	<input type="checkbox"/> Biochemistry, Genetics and Molecular Biology	896
	<input type="checkbox"/> Environmental Science	599
	<input type="checkbox"/> Arts and Humanities	543
	<input type="checkbox"/> Social Sciences	423
	<input type="checkbox"/> Multidisciplinary	337
	<input type="checkbox"/> Computer Science	305
	<input type="checkbox"/> Mathematics	261
	<input type="checkbox"/> Business, Management and Accounting	168
	<input type="checkbox"/> Pharmacology, Toxicology and Pharmaceutics	125
<input type="checkbox"/> Earth and Planetary Sciences	90	

Limit to > Exclude > ☒ Limit to publications in the past 5 years

[< Previous step](#) [Next step >](#)

**6**

1. Create definition 2. Refine definition 3. Save definition

### Define a new Research Area

[View quick guide](#)

Save your Research Area as  
**Medicine Research Area** 22 of 300

Add tags (optional)

This Research Area will be updated approximately every two weeks with new publications matching the definition.

[View Research Area Summary](#)

This Research Area is defined as:

**Entities:**

- RNA, Long Untranslated; Neoplasms; cancer tissues (T.115)
- Aortic Valve; Aortic ... (T.32)
- Stroke; Thrombectomy; anterior circulation (T.22)
- Brain computer interface; Electroencephalography; steady-state visual (T.23)
- Carcinoma, Non-Small-Cell Lung; Receptor, Epidermal Growth Factor; lung cancer; (T.19)
- Immunotherapy; Melanoma; immune-related adverse (T.403)
- Atrial Fibrillation; Catheter Ablation; fractionated atrial (T.10)
- Anticoagulants; Atrial Fibrillation; direct factor (T.65)
- Fatty Liver; Liver Diseases; non-alcoholic steatohepatitis (T.13)

[< Previous step](#) [Save and finish >](#) [Save and define another Research Area >](#)

**Refine the Research Area** by limiting it to select subject areas, Scopus sources, Institutions, Counties or Organization types

**5. Save your new Research Area** with a unique name and add relevant tags

**6. Research Areas** will be made available across the platform to:

- Assess your institution's performance within the field
- Identify top institutions and keywords
- See the publication and citation trends

# Define Researchers and Groups

Define one or many Researchers or Groups via a number of options:

1

Define a new Researcher

1. Search 2. Select 3. Validate publications (optional) 4. Save Researcher

The Researcher you want to add may be known in Scopus by more than one author name variant. Search below for Scopus author name variants of the Researcher you want to add.

Last name First name  
Affiliation

+ Add another field

2

Import Researchers

1. Upload file or paste IDs 2. Refine authors 3. Organize and save

Import Researchers

Here you can import a list of Scopus authors into SciVal. Please upload a text file containing Scopus author metadata.

Paste IDs

Alternatively, you can paste a list of Scopus author IDs or ORCID IDs in this field (one ID per row, max. 1,000).

Drop file here or click to upload (CSV, XLS, JSON, or text file)

3

Define a new Group of Researchers

All Researchers and Groups All tags

Type to filter

My Researcher Group 1

+ Add group

Al, Liufa  
Alzawa, Kiyoharu  
Andoni, Alzawadi  
Babinko, Arman Y.  
Bai, Wan  
Bertini, Marco  
Beta University  
Bodurina, Petros T.  
Cai, Deng  
Cakici, Fatih  
Cao, Yan  
Carmela-Peygibian, Miguel A.  
Chen, Patrick H.K.  
Cheng, Shihui  
Chemistry Auckland  
Cheng, Jian  
Chinese Academy  
Cooper, Sarkey, Amanda M.

4

Athena University

3rd (QS) • 6th (THE) • 1st (ARWU) | United States | More details on this Institution

2015 to 2018 no subject area filter selected ASJC

Summary Topics & Topic Clusters Collaboration Published Viewed Cited Authors Economic Impact Societal Impact Awards

Authors

Top 500 authors, by number of publications at Athena University over the period 2015 to 2018. Note that some authors may no longer be affiliated with Athena University.

Name	Publications	Most recent publication	Citations	h-index
1. Franklin, Melissa E.B.	465	2018	10,163	100
2. Bhatt, Deepak L.	443	2018	7,430	112
3. Huth, John E.	437	2018	10,015	89
4. Morii, M.	428	2018	9,811	79
5. Sun, S.	360	2018	9,235	54

## 1. Define a new Researcher

- Search by name
- Select the author name variant of the researcher you're looking for

## 2. Import Researchers

- Import a list of up to 1,000 Scopus authors
- Refine the profiles
- Put the profiles into a group e.g. faculties and schools

## 3. Define new Group of Researchers

- Select and combine your self-defined Researchers into one or more Groups

## 4. Drag and drop authors from the Authors tab across to the selection panel



ELSEVIER

# Define Publication Sets and Groups

You can create Publication Sets which you can use for grant applications, performance assessment and project management. Publication Sets are static.

**1** In the left sidebar, click on **Publication Sets**.

**2** Click on **Define a new Publication Set**.

**3** In the **Import Publication Set** dialog box, click on **Upload file or paste IDs**.

**4** In the **Define a new Publication Set** dialog box, click on **Select publications**.

**5** In the **Select publications** step, select the publications you want to include in the set.

**6** In the **Select publications** step, click on **Save Publication Set**.

**7** In the **Define a new Publication Set** dialog box, click on **Save Publication Set**.

## Importing publication lists:

In case you have a set of publications that cannot be retrieved by keyword search, you can now upload them to SciVal.

- Go to My SciVal, select **Publication Sets** from select-entity panel, then click **Define a new entity** and select **Import a Publication Set**.
- Select **ID format** and upload text file.
  - Scopus EID**  
Unique identifier assigned to all of Scopus records.
  - PubMed ID**  
Unique identifier assigned to PubMed records.
  - DOI (Digital Object Identifier)**  
Unique identifier assigned to a digital object such as journal articles.
- Confirm **publications** and save.

## Create a subset of Researcher's publications:

You can select publications from your researcher's publication history to create a group.

- Click to **Define a new Publication Set**

Note: You need to have pre or self-defined researchers added to your select-entity panel to activate this menu.

- Select a **Researcher** from your list.
- Select your desired publications.
- Save publication set.

# Managing My SciVal

Within My SciVal you can do the same things as you can in each module plus you can also:

**1**

## Edit this Research Area

1. Create definition 2. Refine definition 3. Save definition

Refine your definition by applying one or more filters

Definition of your Research Area: Industry; Petrochemicals; motor gasoline (T.6003) OR Solar cells; Heterojunctions; ... (T.0) Show all

> Total matching publications (2013-present) 2,351

Currently applied filters: (Multidisciplinary X OR Environmental Science X)

Name	Publications
<input type="checkbox"/> Multidisciplinary	1,190
<input type="checkbox"/> Environmental Science	1,161
<input type="checkbox"/> Energy	629
<input type="checkbox"/> Chemical Engineering	502
<input type="checkbox"/> Engineering	359
<input type="checkbox"/> Chemistry	317
<input type="checkbox"/> Materials Science	245
<input type="checkbox"/> Biochemistry, Genetics and Molecular Biology	75
<input type="checkbox"/> Business, Management and Accounting	65
<input type="checkbox"/> Agricultural and Biological Sciences	48
<input type="checkbox"/> Earth and Planetary Sciences	48
<input type="checkbox"/> Computer Science	41
<input type="checkbox"/> Social Sciences	38
<input type="checkbox"/> Medicine	35
<input type="checkbox"/> Physics and Astronomy	20
<input type="checkbox"/> Pharmacology, Toxicology and Pharmaceuticals	14
<input type="checkbox"/> Mathematics	13

Limit to > Exclude > Limit to publications in the past 5 years

Previous step

**2**

## Tags

Share Edit Delete

Add tags to this entity

Enter a tag

Tag name Private

Sun

Manage tags

**3**

## Sharing settings for "Artificial Intelligence"

Invite users Tags Currently invited / shared with Invitation lists

Invite others to use the entity

1. Enter emails 2. Manage tags

Enter E-mail address(es) or list name(s) (comma separated), or pick from the existing ones.

E-mail

harry.potter@hogwarts.uk Can view

Message (optional)

**4**

## Synchronize Groups

1. Upload file 2. Organize and save

Import Researchers and Groups

Upload a text file containing Scopus author profiles and groups, and synchronize the data with your existing Researchers and Groups in My SciVal.

Drop file here or click to upload (CSV, XLS, JSON, or text file)

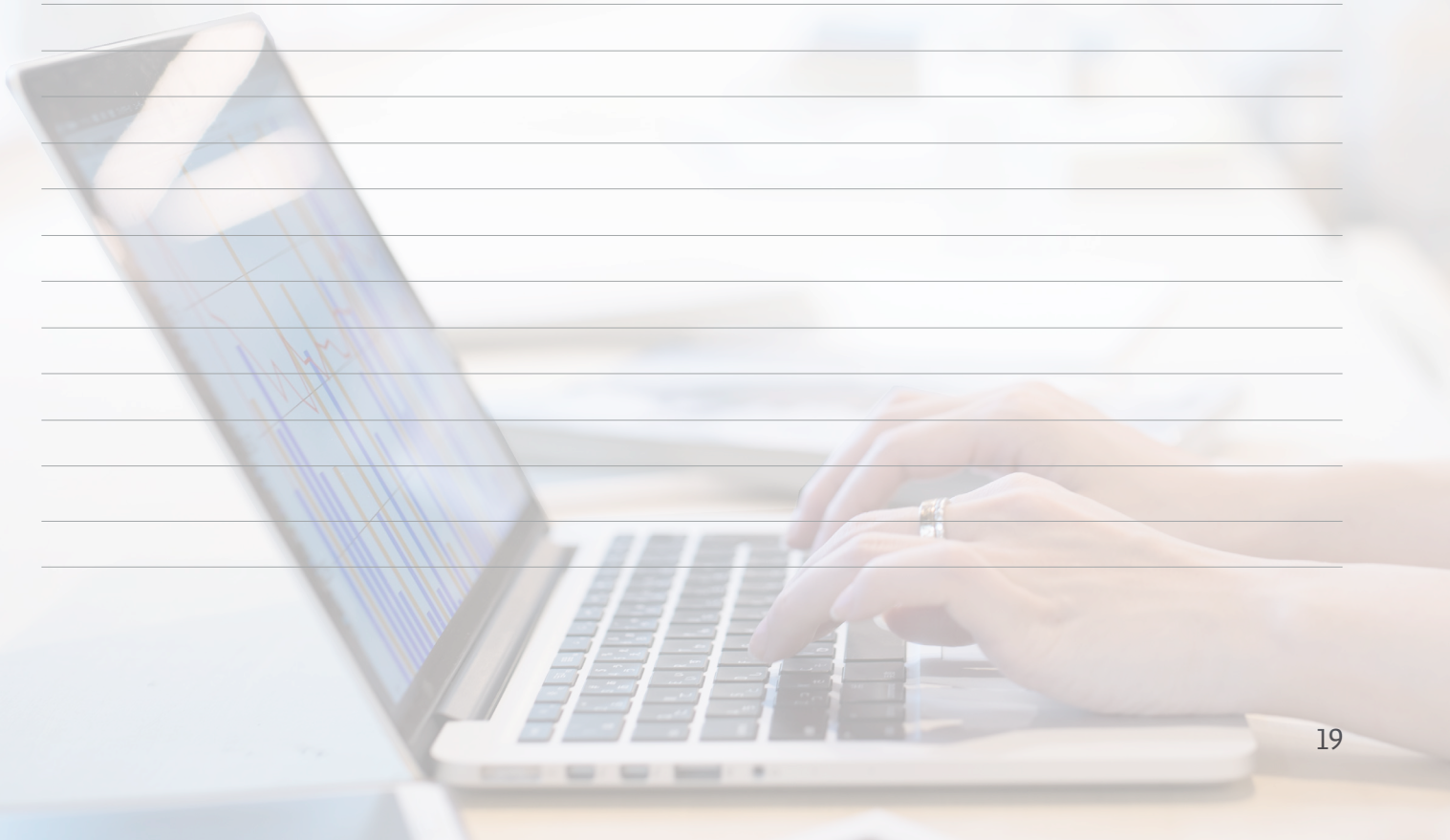
Entities can be deleted from the left panel, but will remain in my SciVal

1. **Edit Research Areas** by adding more research terms or applying more filters.
2. **Add tags** by departments or projects to manage Researchers and Groups of Researchers with ease. See all you tags in your Tag Manager, where entities can be untagged, or tags can be merged or deleted.
3. **Share** entities with other SciVal users
4. **Synchronize** a master spreadsheet with the existing hierarchy in SciVal

ELSEVIER



## Notes





For more information about SciVal,  
visit [elsevier.com/scival](https://elsevier.com/scival)

**Elsevier offices**

ASIA AND AUSTRALIA

Tel: + 65 6349 0222

JAPAN

Tel: + 81 3 5561 5034

KOREA AND TAIWAN

Tel: +82 2 6714 3000

EUROPE, MIDDLE EAST AND AFRICA

Tel: +31 20 485 3767

NORTH AMERICA, CENTRAL AMERICA AND CANADA

Tel: +1 888 615 4500

SOUTH AMERICA

Tel: +55 21 3970 9300

